

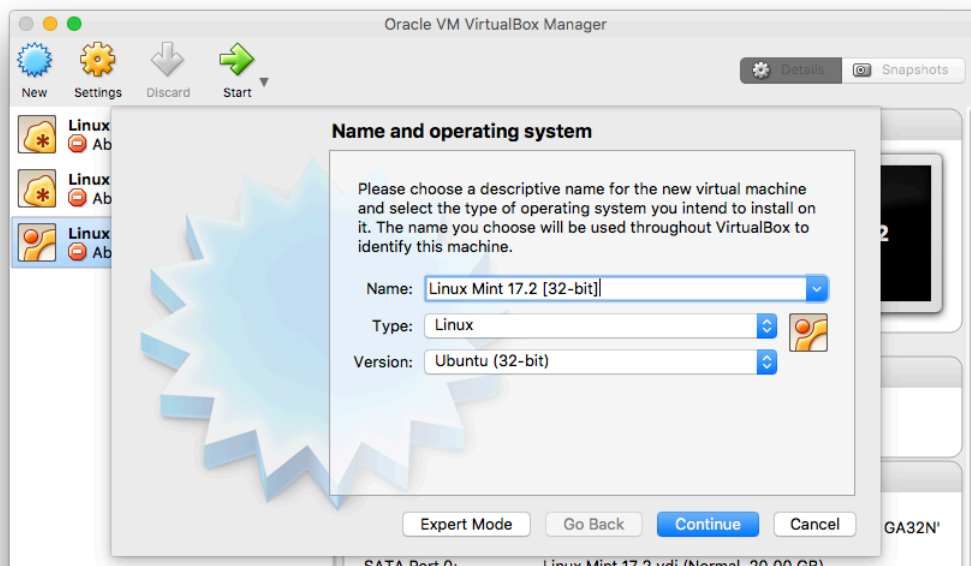
## Install software application

Knowledge evidence.

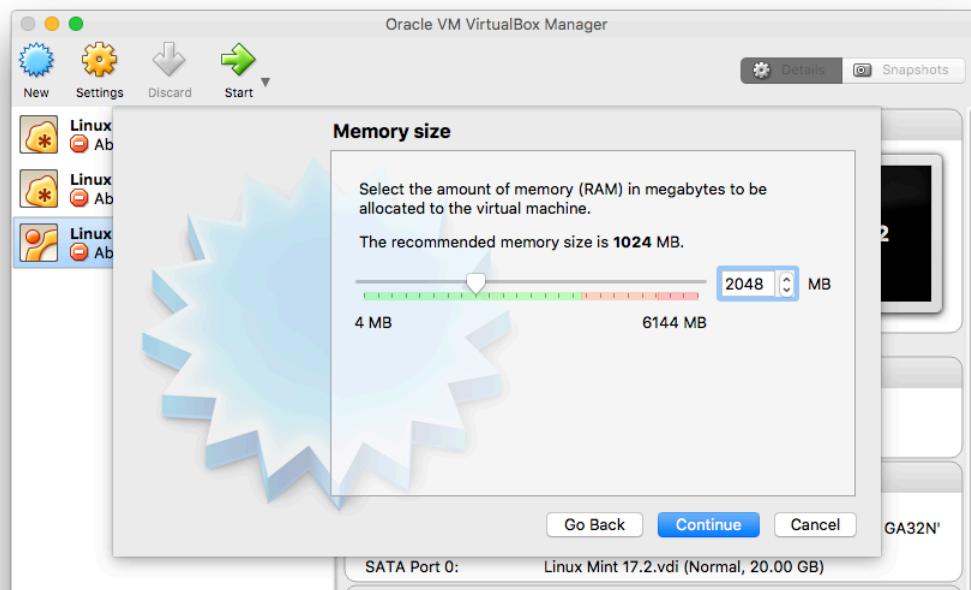
These are the screenshots to show the process of how I installed/setup Linux Mint 17.2 32-Bit and examples of test run.

### Part 1 – Setup Linux in Virtual Machine

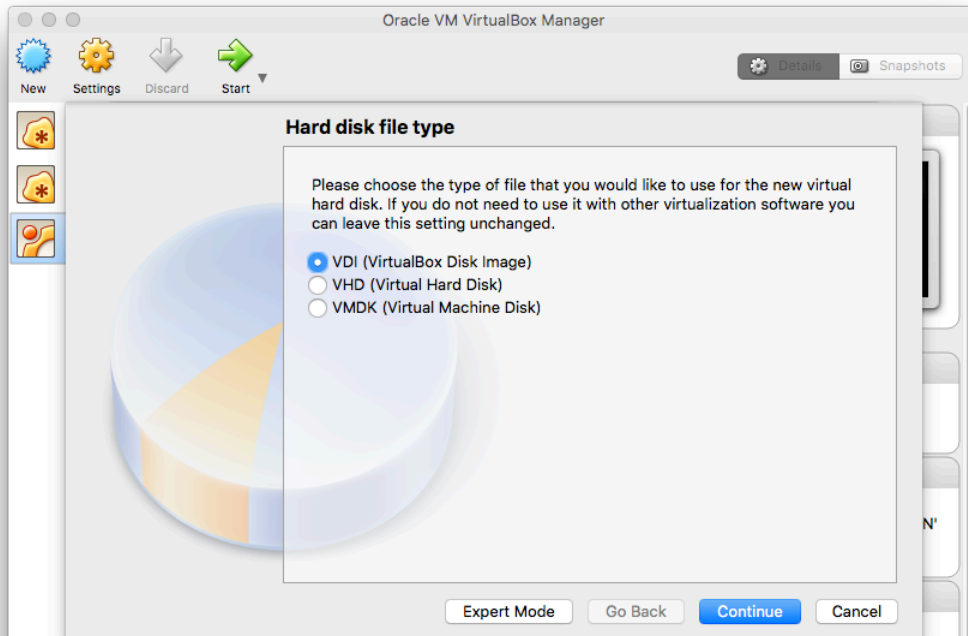
#### Step1: System Type

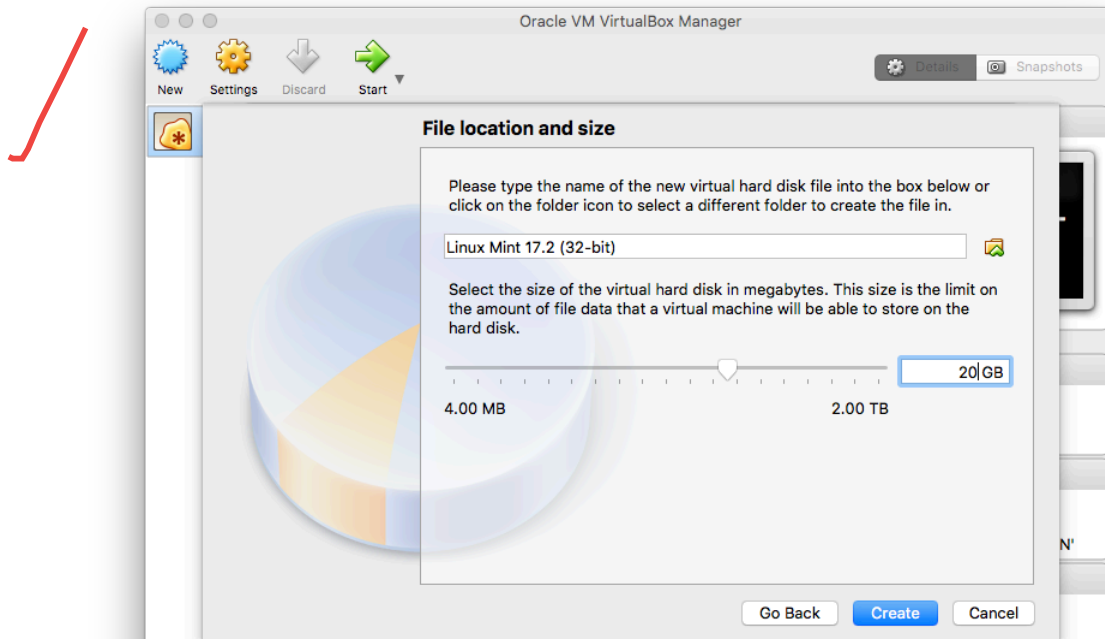


#### Step2: Amount of RAM

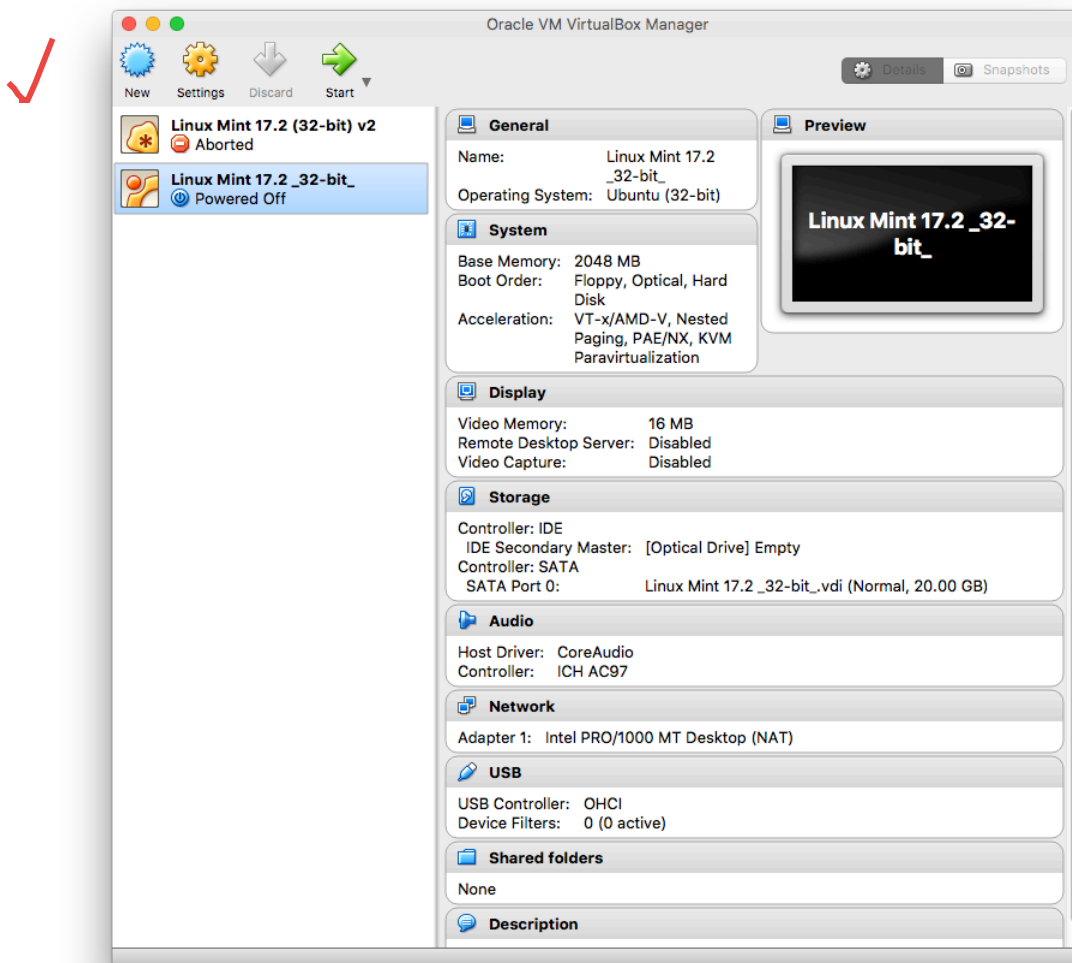


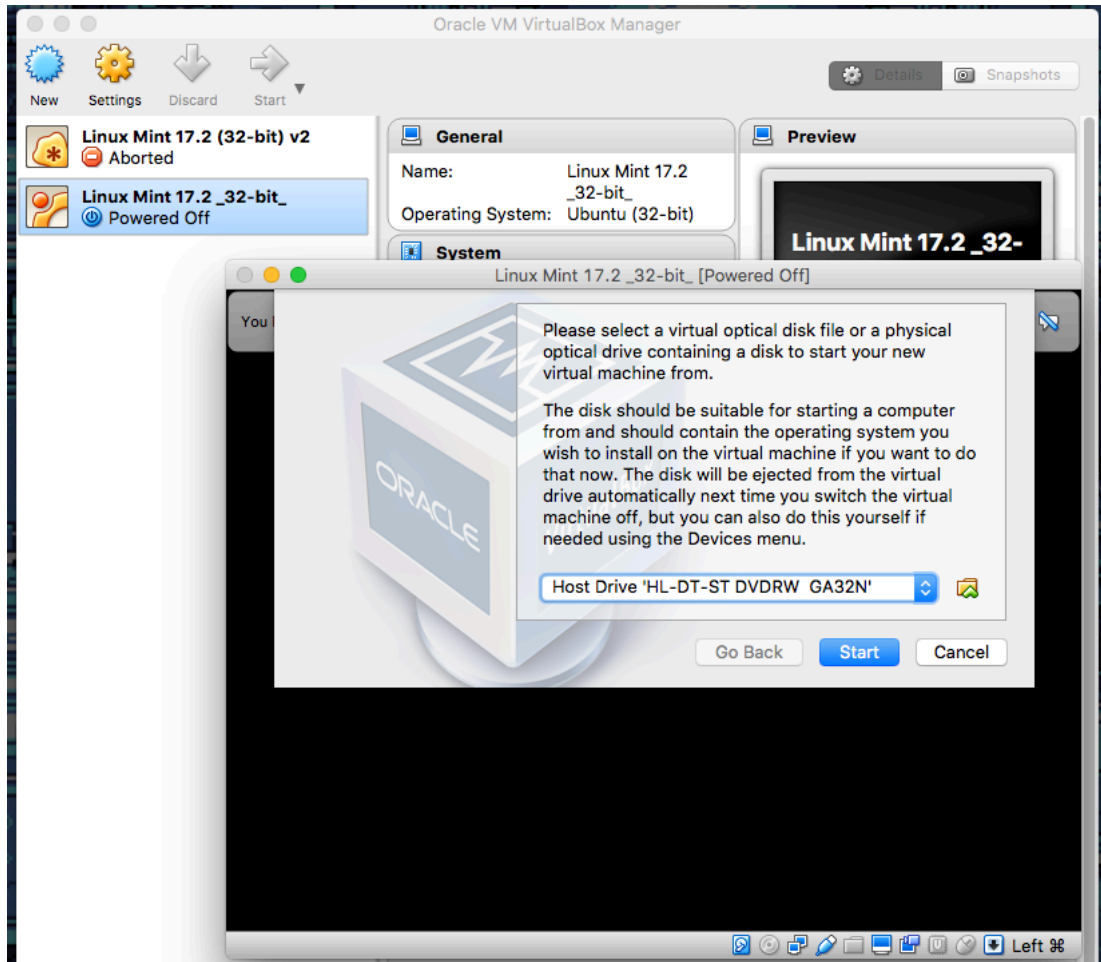
### Step3: Creating Virtual Hard Drive



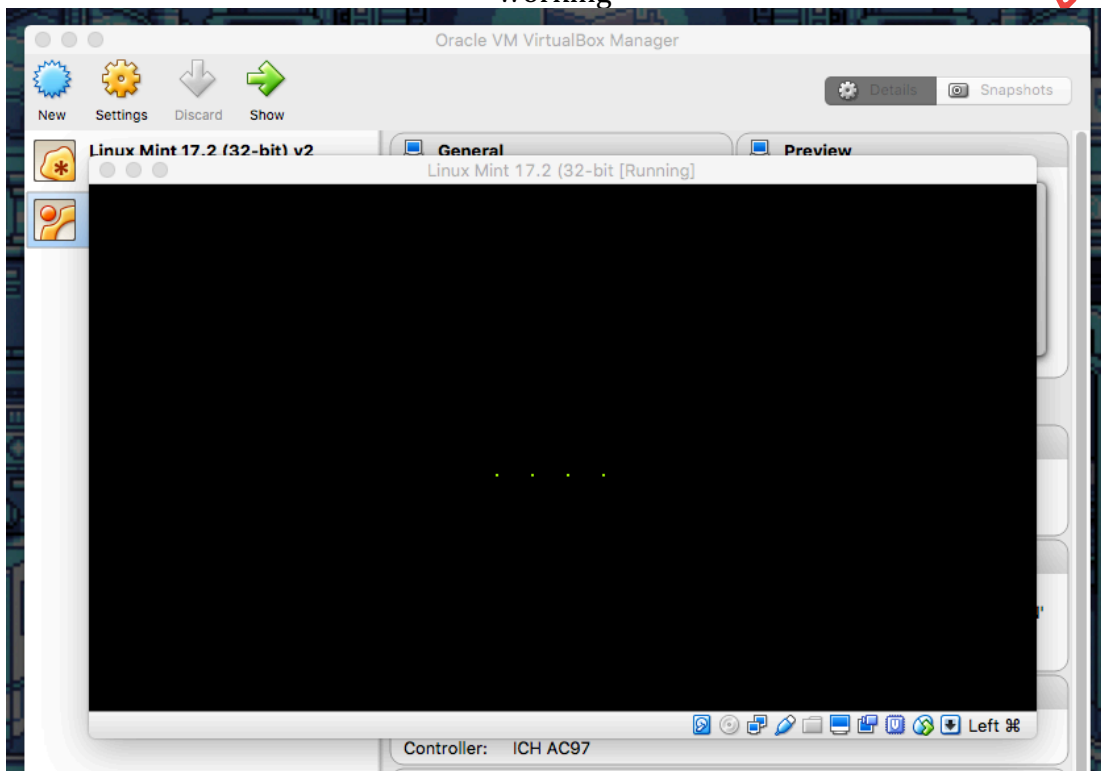


#### Step4: Select Linux ISO File

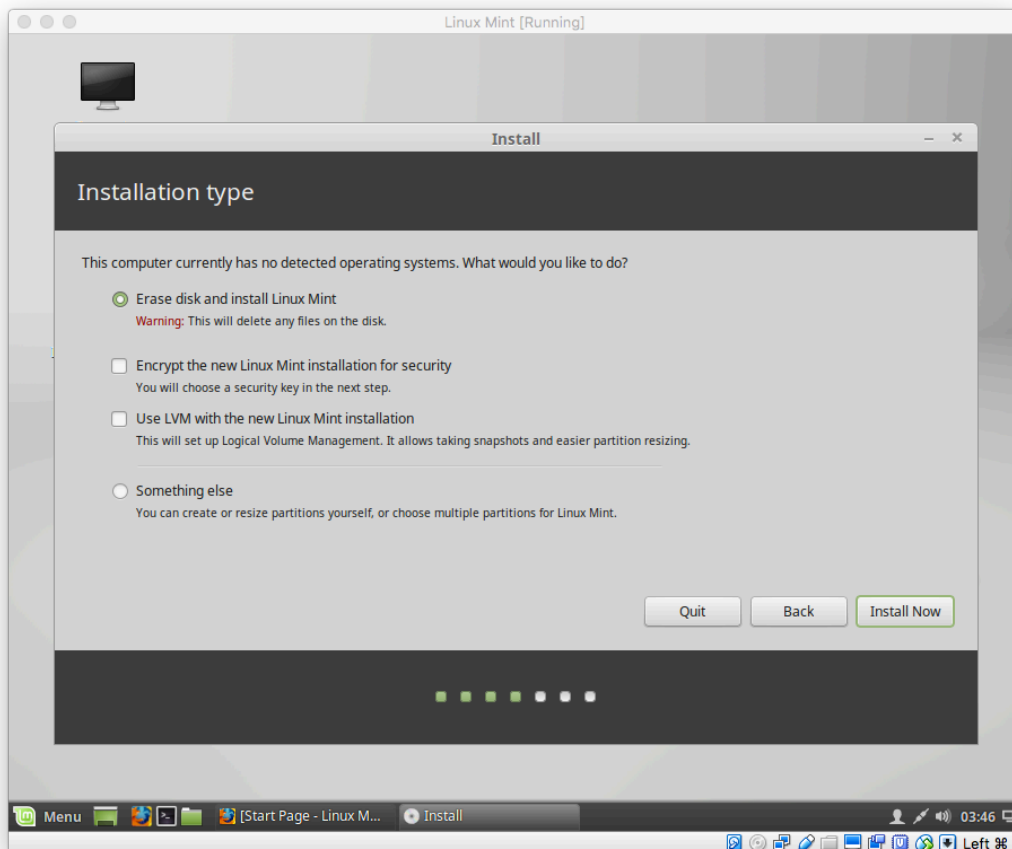
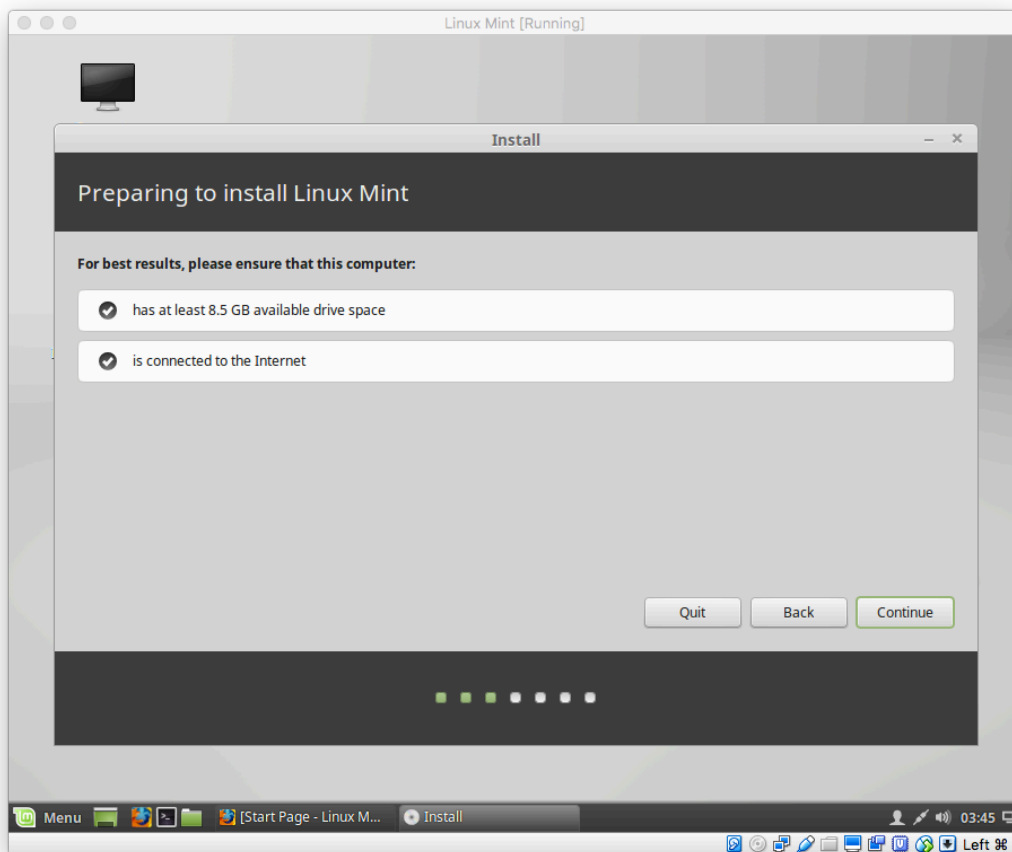


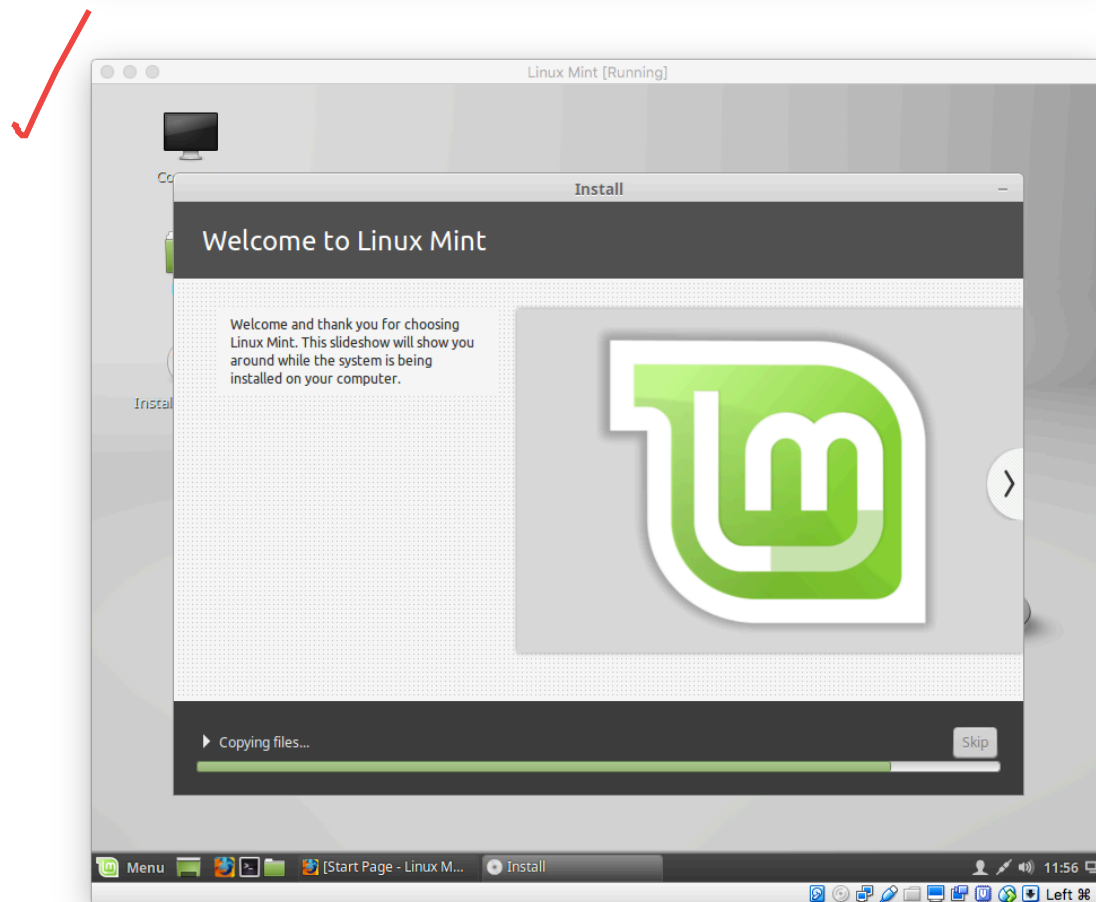
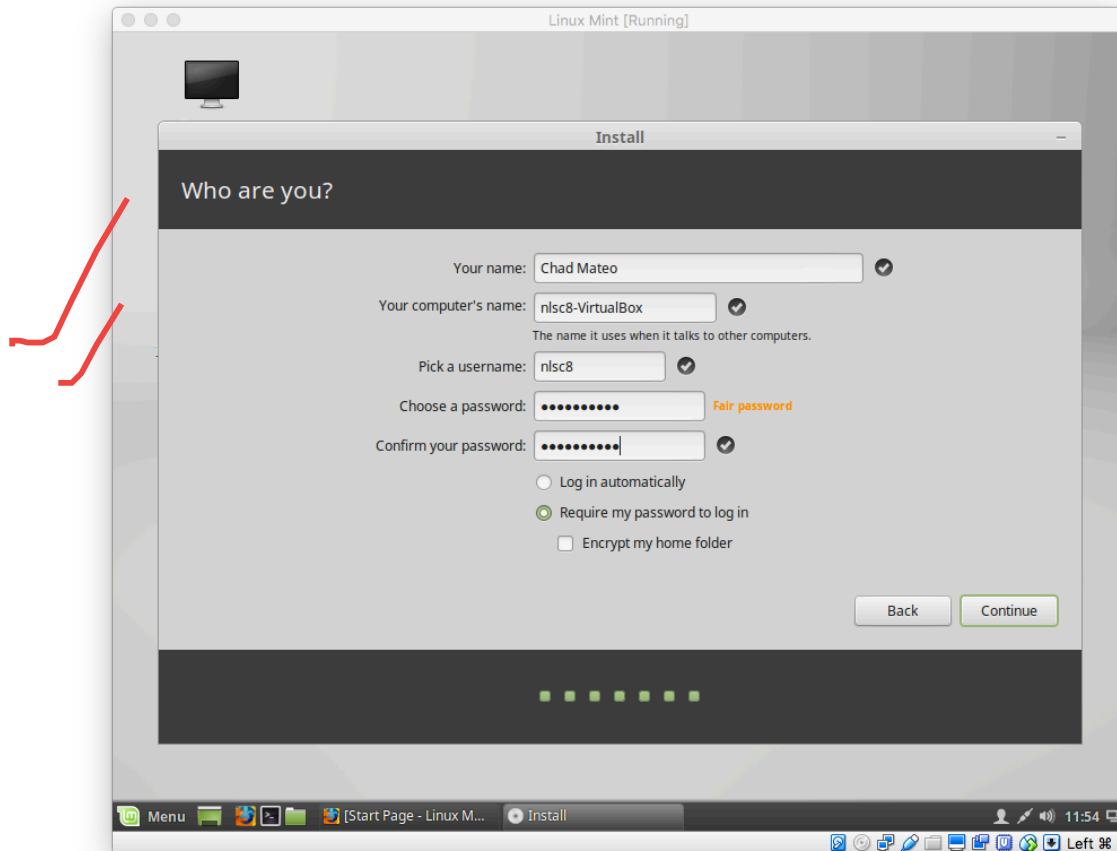


Note: if the loading screen (green dots) pops up, it indicates that the setup is working



### Step5: Installing Linux from the disk and making an account

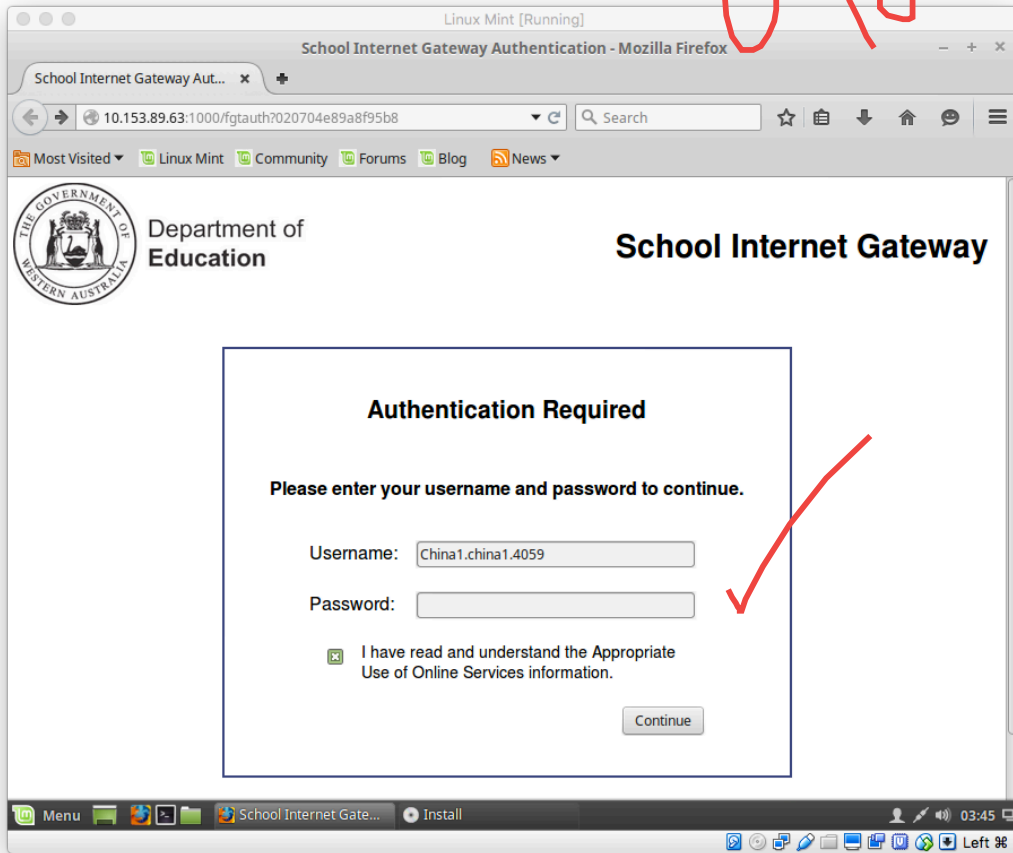




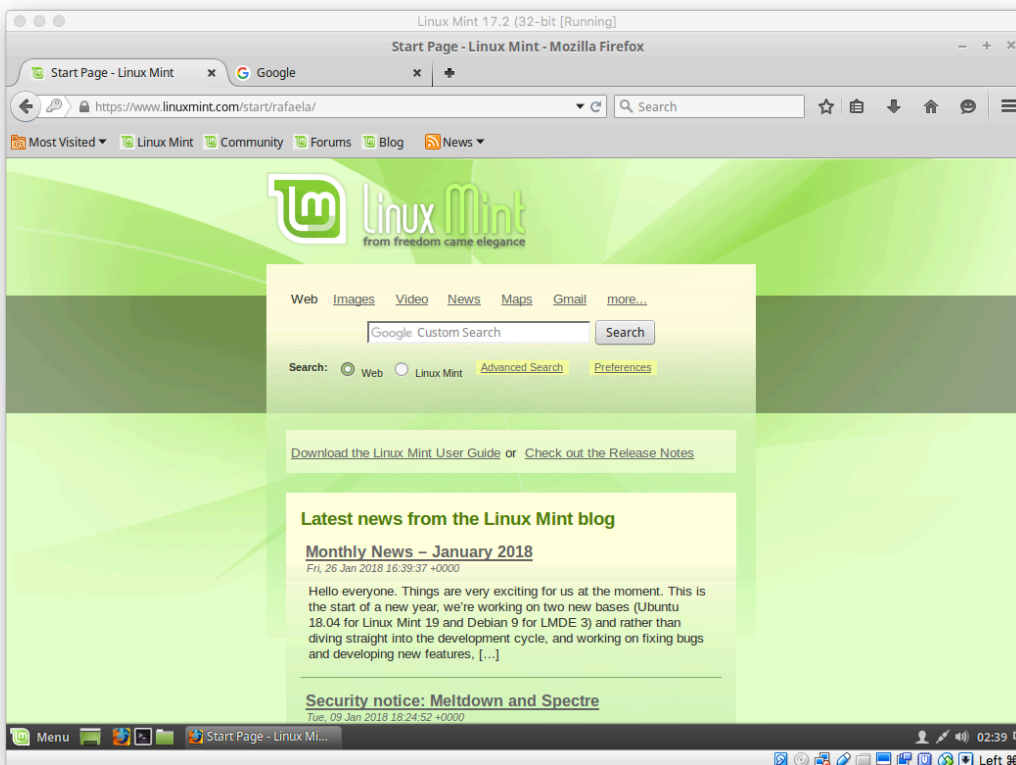
Step6: Update Linux (optional)

*g o p d  
i o e a*

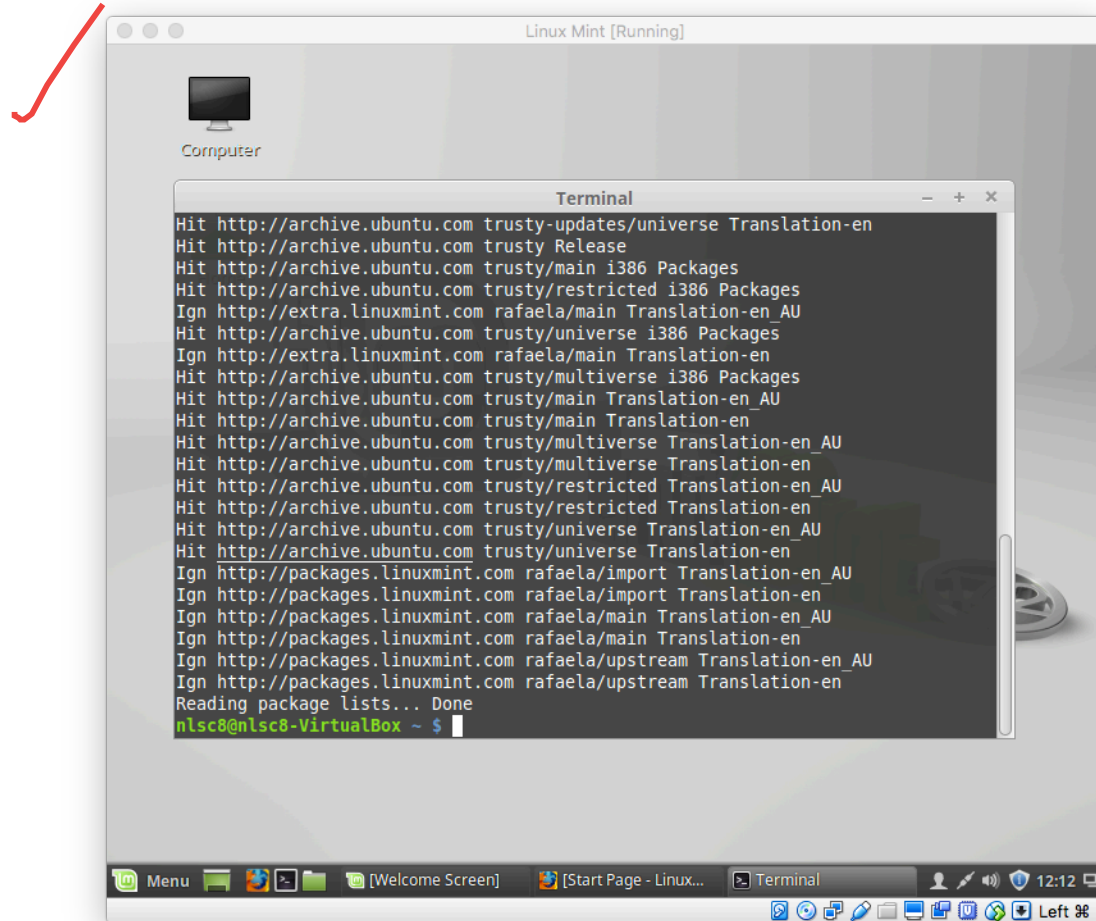
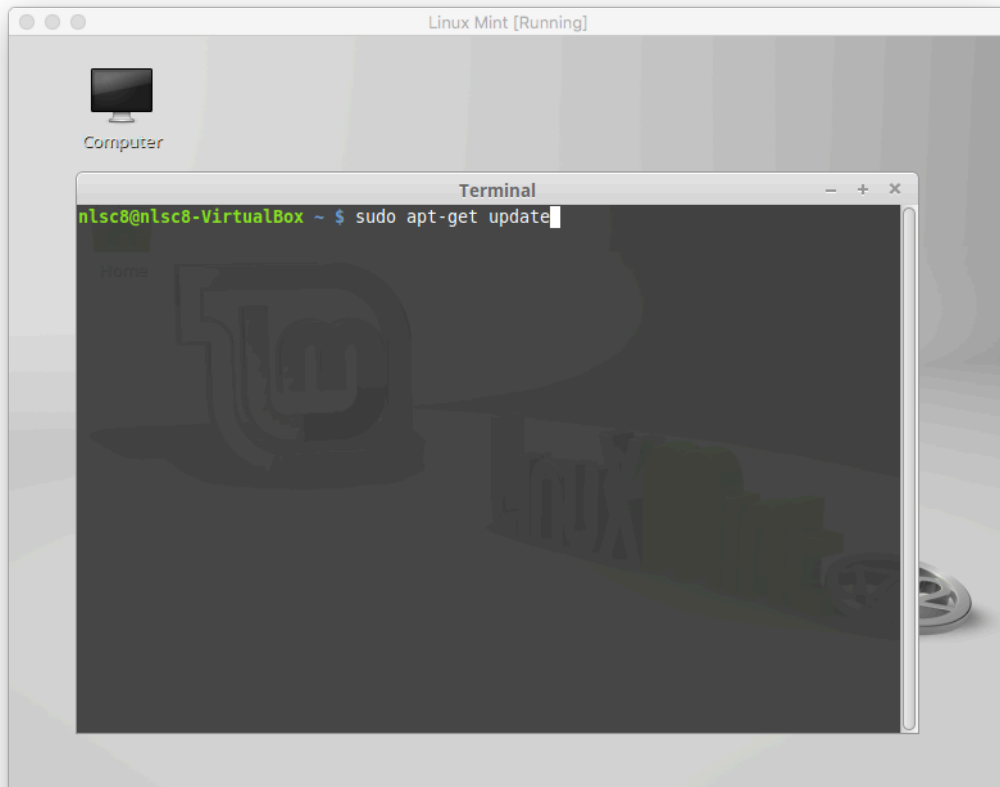
But firstly, check Internet network if connected



*/*



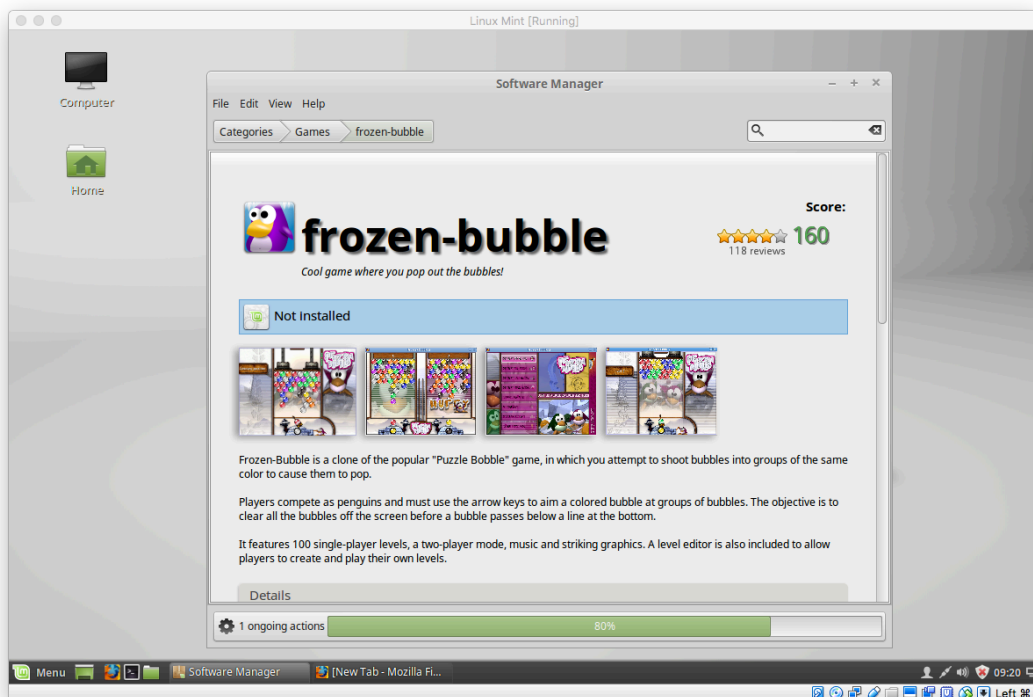
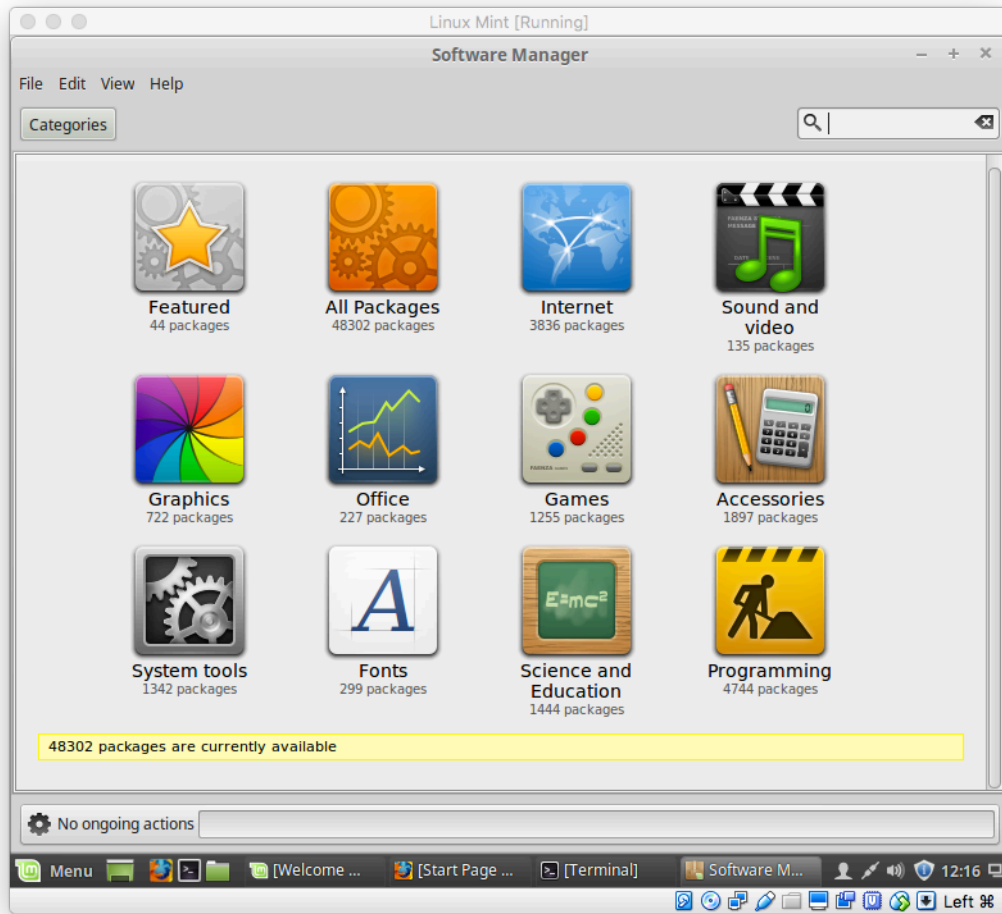
update time! simply- open terminal and log in then type “sudo apt-get update”

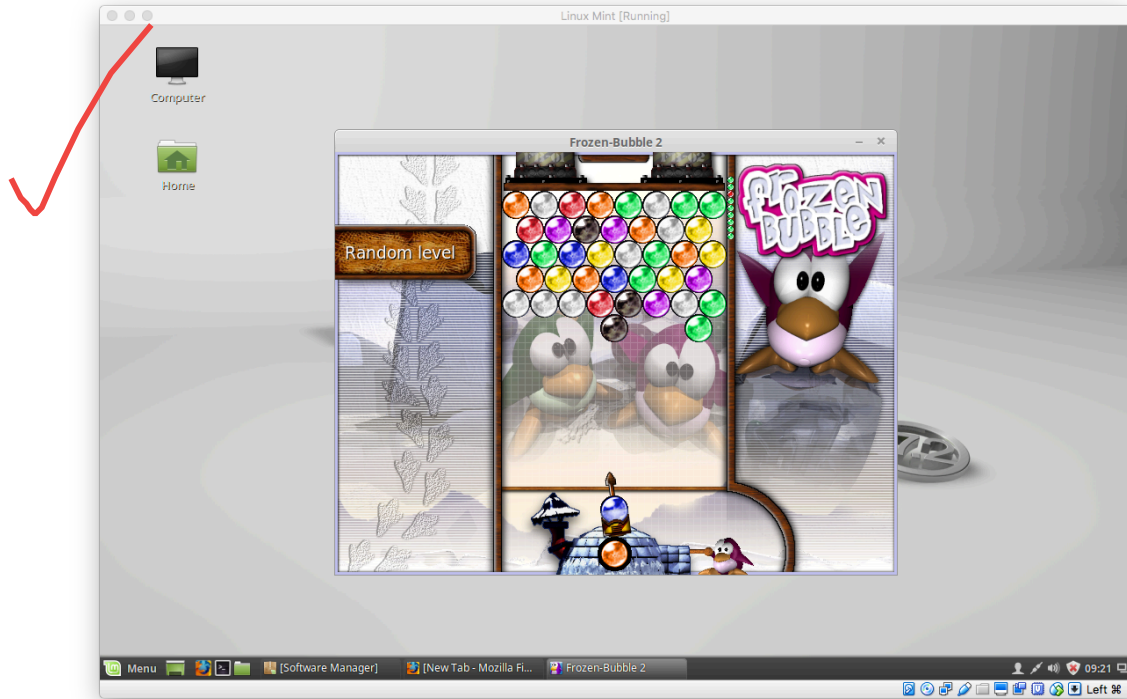




Part 2 – Test Run (installing softwares)

#1-Installing games from Software Manager





## KNOWLEDGE EVIDENCE

describe a typical client business domain

-A typical business domain is composed with the name of the business. eg. "www.pizzaplace.com" instead of IP address like "178.54.98.213"

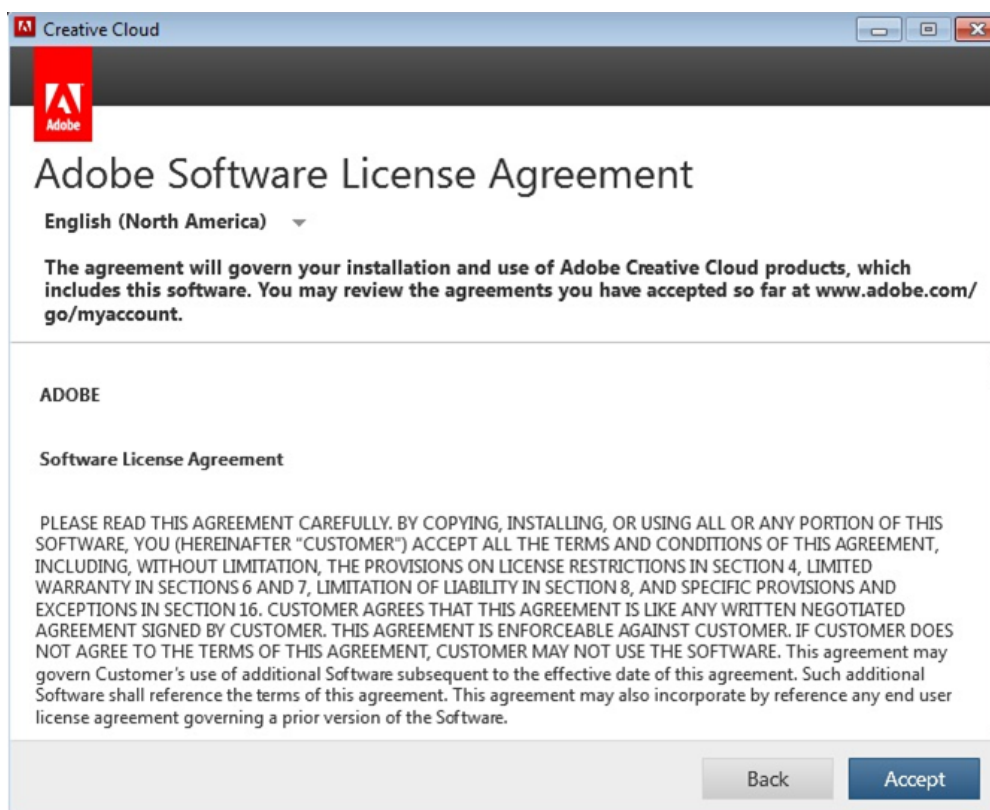
identify typical hardware storage devices

-Some typical hardware storage devices are floppy diskette, hard disk drive, USB, USB flash drive, and compact disc.

identify typical input and output devices

-Some typical input and output devices are monitor, keyboard, mouse, printer, web cam, and scanner.

describe key licensing arrangements and responsibilities to ensure they are adhered to



-EULA (End-User License Agreement)

whenever people install a software/app, there's always an agreement term and condition text included. This authorises the user to legally consume or use the software/app according to the terms and conditions.

identify operating systems supported by the organisation

-A company's operating systems or the term "business operating system" (BOS) refers to standard, enterprise-wide collection of business processes used in many diversified industrial companies.

describe the organisational guidelines for purchasing

-The organisational guidelines for purchasing are for legal reasons and to ensure that the financial probity is assured.

identify the installation requirements for key software application packages

-The installation requirements for key software application packages are the agreements and terms that need to be agreed, where to save the file/documents, and some custom option or advance setting.

*Well done chad*

describe typical software copyright responsibilities.

-The main responsibility of a software copyright is to protect the original works of the developer. The reason why software developers use software copyright is to prevent unauthorized copying of their software.

*Just need some forms filled out*